

# Conducting Vapor Testing

## Former Houston Wood Preserving Works

### Your Safety Matters

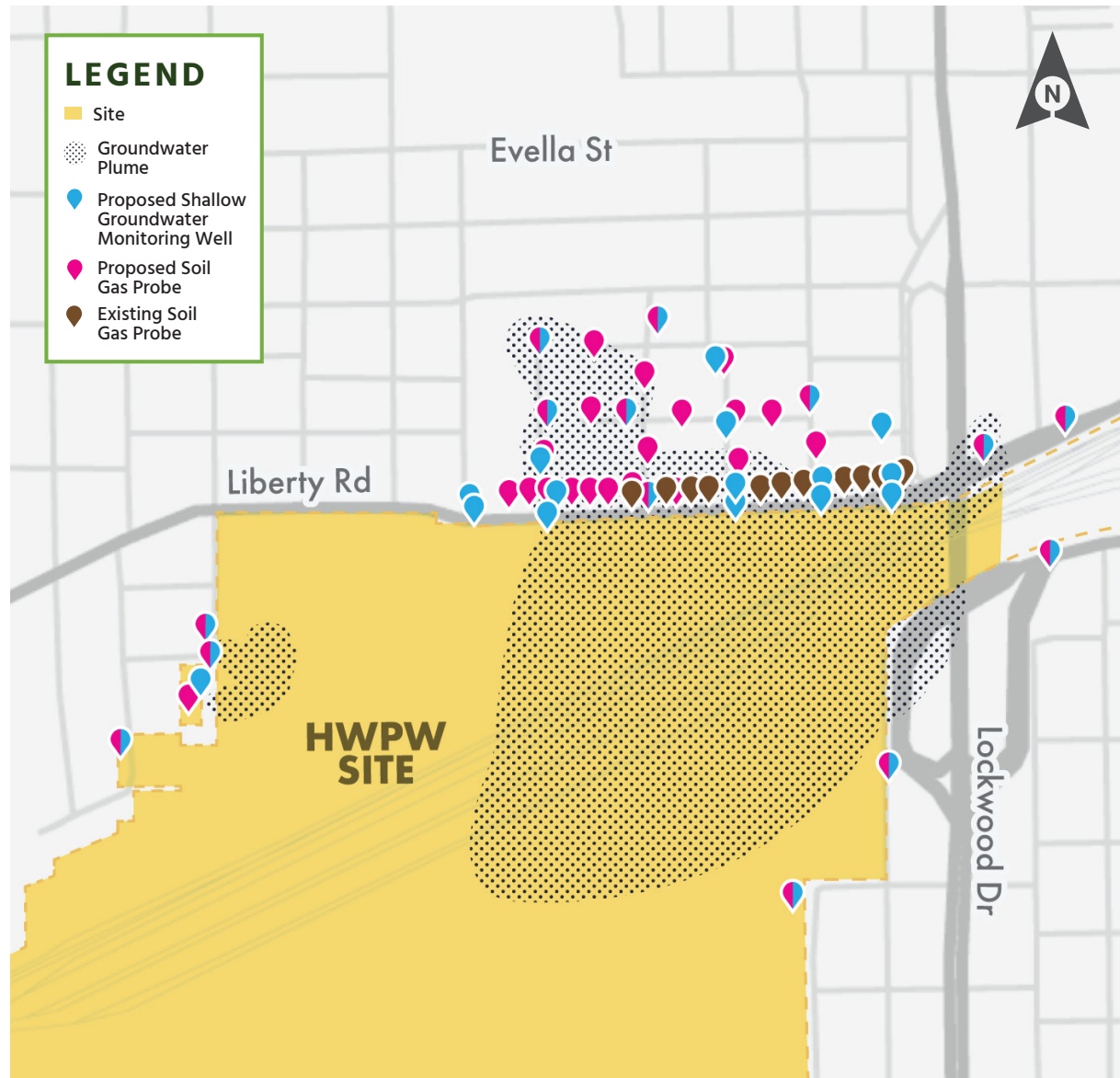
Your safety and well-being are important to us at Union Pacific, and we will continue taking action to safeguard the Fifth Ward community. In partnership with the U.S. Environmental Protection Agency (EPA), Union Pacific is completing tests to evaluate potential threats to indoor air quality near the former Houston Wood Preserving Works (HWPW) site.

### Using a Phased Testing Approach

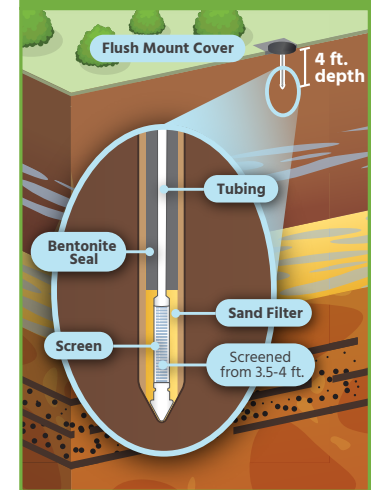
Union Pacific is working to understand if any chemicals from the historically contaminated HWPW site can migrate into the indoor air of homes and buildings. EPA has approved a phased approach to assess potential risks by collecting samples from:

- ▶ Sanitary sewer and storm drain (vapor and liquid)
- ▶ Soil gas and outdoor air
- ▶ Shallow groundwater

This testing is similar to what Union Pacific did in 2020.



### Diagram of a Soil Gas Probe



### BY THE NUMBERS

As proposed in the EPA-approved work plan:

**45** Soil Gas Samples

**20** Outdoor Air Samples

**32** Shallow Groundwater Samples

**34** Sanitary Sewer Samples (17 air/17 liquid)

**46** Storm Drain Samples (23 air/23 liquid)

# Conducting Vapor Testing

Former Houston  
Wood Preserving  
Works

## What are we trying to find with vapor testing?

Vapor testing is integral and just one part of Union Pacific's long-term commitment to the safety of Fifth Ward. While previous testing has shown no risk to residents, we're aiming for thoroughness for the safety of the community. Union Pacific is working with the EPA, on a testing plan to re-check vapor movement and guide next actions.

### Storm Drain

Storm drains can act as pathways for water and vapor to migrate underground. Union Pacific will collect samples from the storm drains to assess if chemicals are present and whether they could affect indoor air quality.

### Sanitary Sewer Lines

Sanitary sewer (wastewater, i.e. toilets, sinks, etc.) lines can sometimes allow vapors to enter buildings if the systems aren't functioning properly. Union Pacific will collect samples from sanitary sewers in streets and public rights-of-way to assess for site chemicals, and evaluate potential pathways to indoor air.

### Soil Gas & Outdoor Air

Union Pacific will collect soil gas samples to determine if there are any potentially harmful chemicals from groundwater and soil in the area. Outdoor samples are being collected at the same time to assess any impact from external sources like car exhaust, industrial emissions, and combustion.

### Shallow Groundwater

Union Pacific will collect shallow groundwater samples from monitoring wells positioned near the former HWPW site, allowing us to evaluate the presence and levels of chemicals.

